



ISE[®] CENTRAL EXECUTIVE FORUM

Nominee Showcase Presentation

HMS

Secure Cloud Infrastructure

Michael Madero

Manager, Security Architecture



Company Overview



- HMS delivers the broadest range of solutions in the industry to improve financial and health outcomes for at-risk organizations.
- Services include Coordination of Benefits, Payment Integrity, and Health Management and Engagement Solutions.
- 2,500 employees
- \$500+ Annual Revenue
- National company with over 25 offices across the country
- At HMS, we're trusted to manage data from more than 290 health plans, 40-plus state and federal agencies, and nearly 700 self-funded employers.



Presentation Overview

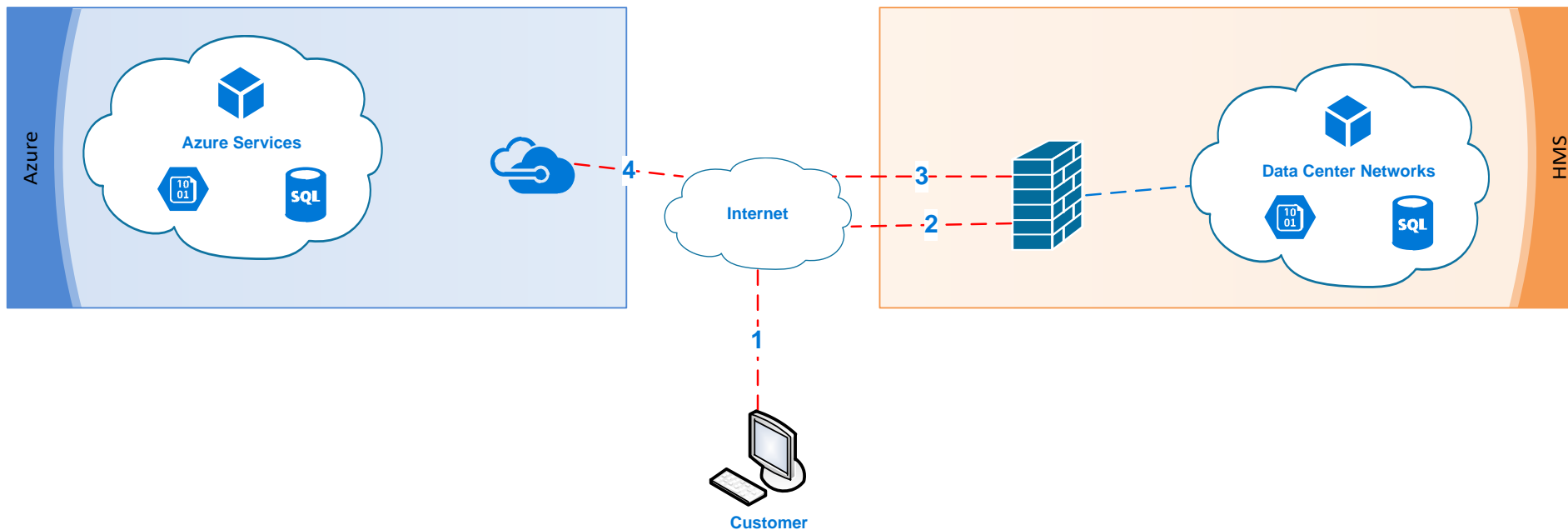
High Level Goals of the Project

- Build a secure infrastructure foundation
 - “Hairpin Turn” through on premises security infrastructure
 - Visibility for SIEM, IPS, and Malware
- Develop standard AuthN/AuthZ patterns
 - Leverage “old” web application conventions (WebSSO/SAML)
 - Integrate with new security patterns (OpenID/Oauth)
 - Enable Single Page Application and API approaches
 - Reduce abrasion with development teams



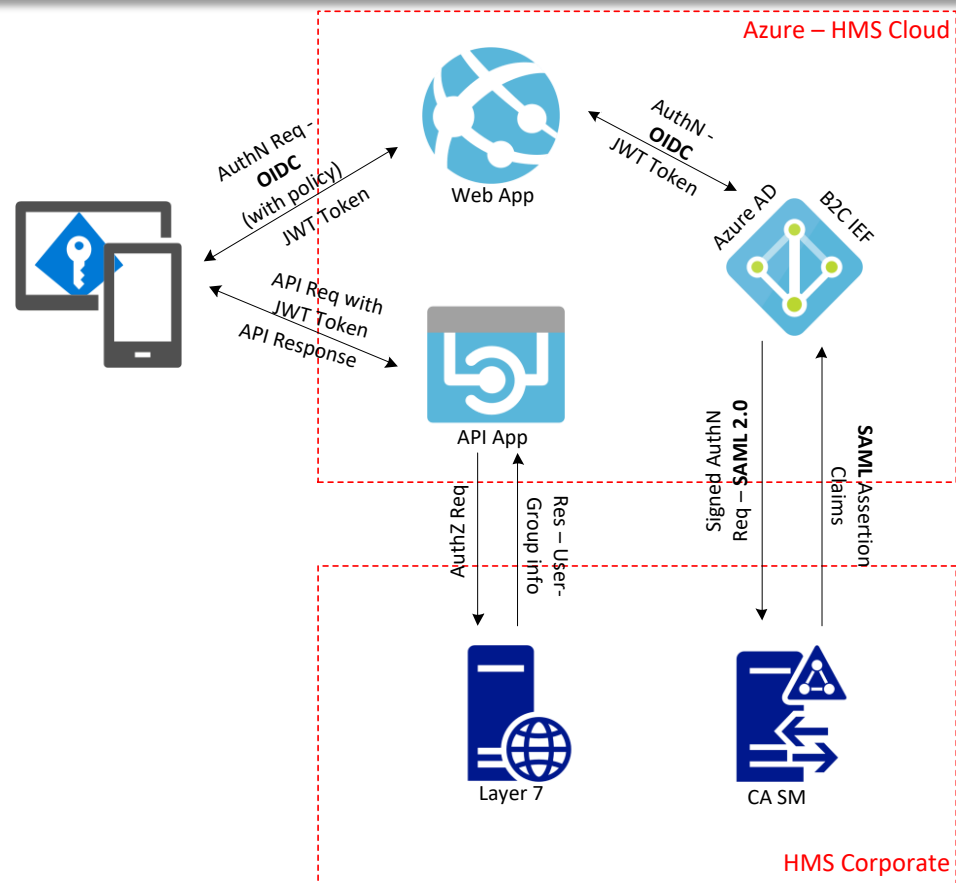
The "Hairpin"

"You want to do WHAT?"





Leveraging the Old with the New



AAD – Azure Active Directory **B2C** – Business to Consumer
IEF – Identity Experience Framework (through custom policies)
OIDC – OpenID Connect **SAML** – Security Assertion Markup Language
CA SM – CA SiteMinder **AuthN** – Authentication
AuthZ - Authorization





Lessons Learned/Best Practices

1. Get buy in from key stakeholders. It's easier when everyone pulls together.
2. Collaborate to identify common milestones to help prioritize which wins to pursue first. (Legacy app integration, Mobile app access, etc)
3. Identify key Vendor feature set alignment/gaps and roadmaps to set expectations with project teams, leadership, and ultimately, customers.
4. Secure software lifecycle development practices definitely help. Explore static and dynamic code analysis.
5. Don't get discouraged. It's not impossible. It's just not "normal".



Thank you and Questions

Questions?

Contact Info:

- Michael Madero
- 469.359.4418
- michael.madero@hms.com

